

Roll No.

Total No. of Pages : 03

Total No. of Questions : 06

B.Tech. (ME) (Sem.-3)

**MACHINE DRAWING**

Subject Code : BTME303/18

M.Code : 76419

Date of Examination : 15-06-2024

Time : 3 Hrs.

Max. Marks : 60

**INSTRUCTIONS TO CANDIDATES :**

1. There are three sections in this question paper.
2. Attempt ALL the questions from SECTION-A carry TWO marks each.
3. Attempt any TWO questions from SECTION-B carry FIVE marks each and any ONE question from SECTION-C carry THIRTY marks each.

**SECTION-A**

**1. Write briefly :**

- a) What is the difference between Blow off Cock and Feed Check Valve?
- b) What is the function of a key?
- c) Explain the terms: Revolved section and removed section with a freehand drawing.
- d) What is the purpose of a Muff Coupling?
- e) **What do you understand by :**
  - i) Length of a weld
  - ii) Size of a weld?
- f) Why machining symbols are used?
- g) Draw the conventional representation of Insulating material and Liquid.
- h) What is caulking and fullering?
- i) Describe the methods of placement of dimensioning with a suitable free hand drawing.
- j) What is difference between allowance and tolerance?

## SECTION-B

2. Draw free hand the sectional front view and right-side view of the Muff coupling.
3. Draw freehand the sectional front view of Spigot and Socket joint used for underground pipelines of large diameters.
4. Draw freehand the full sectional front view and top view of Union Joint.

## SECTION-C

5. The part drawings of a Foot-step Bearing are shown in Figure 1. Assemble the parts and draw full sectional front view and top view. Also show the Bill of Materials.
6. The part drawings of a Blow-off Cock are shown in Figure 2. Assemble the parts and draw Full sectional view from the front and top view. Also show the Bill of Materials.

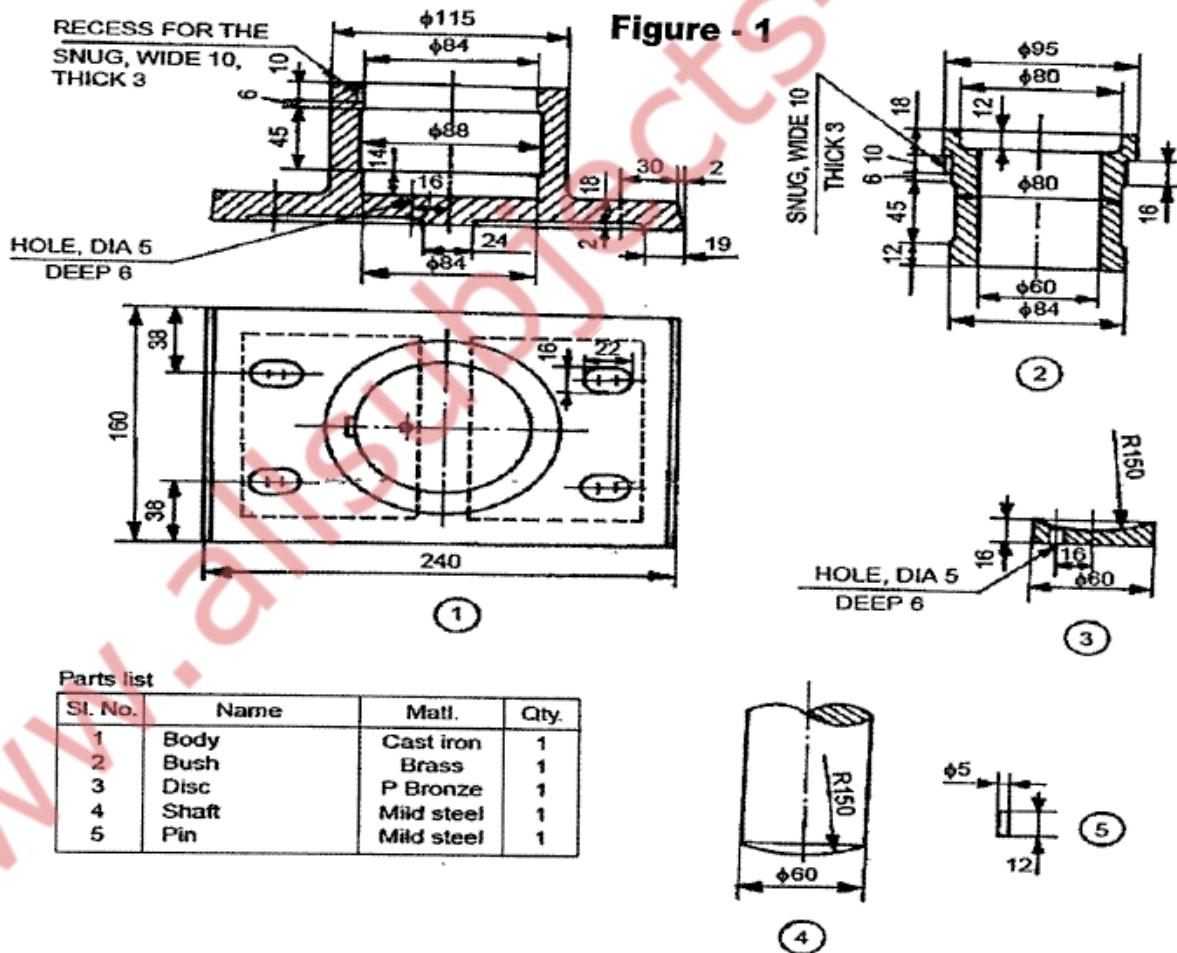
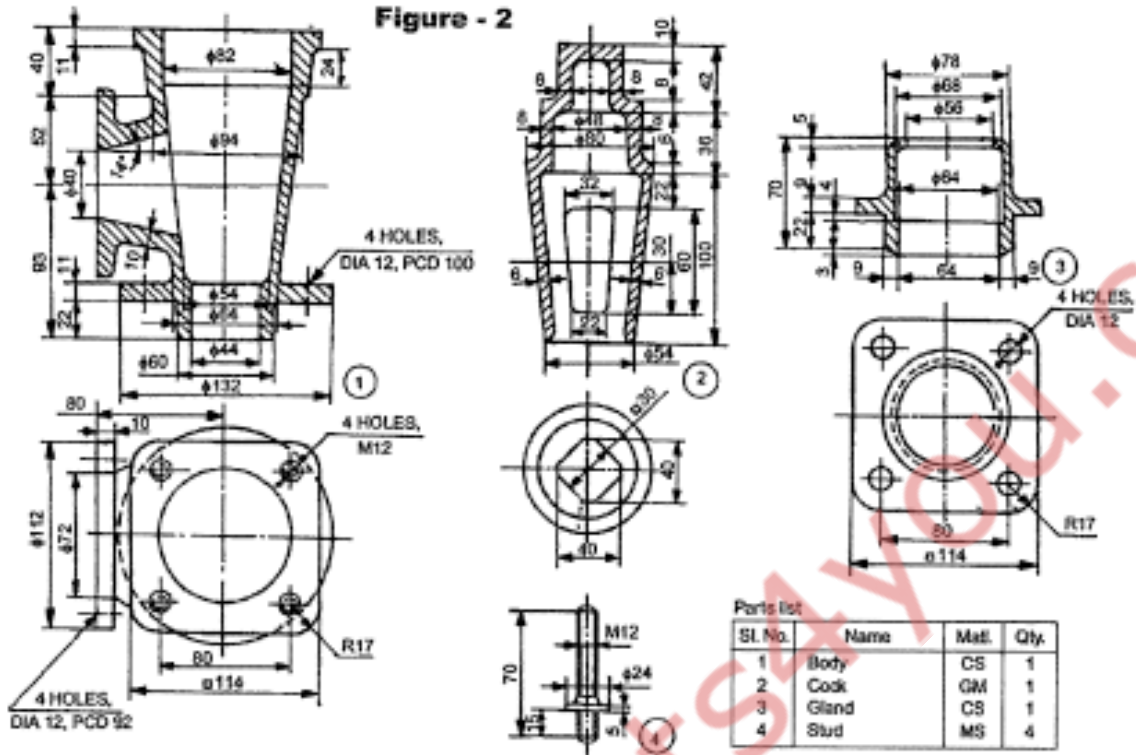


Figure - 2



NOTE : Disclosure of Identity by writing Mobile No. or Making of passing request on any page of Answer Sheet will lead to UMC against the Student.